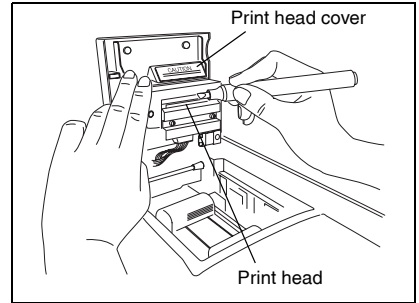


Cleaning the print head

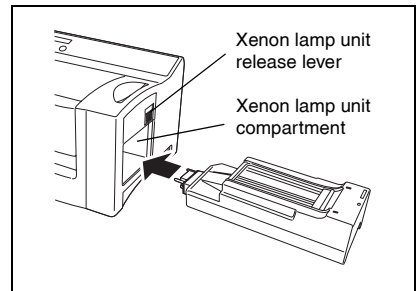
- 1 Flip off the SC-2000USB's power switch.
- 2 Open the ink ribbon compartment cover, then pull back the print head cover.
- 3 Use the enclosed print head cleaning pen to gently wipe back and forth along the print head.
 - ⚠ *Be careful not to touch the print head.*
Keep the cap on the print head cleaning pen when it is not being used.
- 4 Release the print head cover and close the ink ribbon compartment cover.
- 5 Try printing again.
- 6 If the printed characters are still blurred, repeat steps 1 through 5.



Replacing the xenon lamp unit

The xenon lamp unit has a life span of approximately 2000 flashes. When the message "REPLACE Xe UNIT" appears on the display, the xenon lamp unit must be replaced.

- 1 Press the Mode button on the SC-2000USB until "RESET COUNTER" appears on its display, then press the Set button.
- 2 Slide the xenon lamp unit release lever up and pull out the xenon lamp unit.
- 3 Fully insert the new xenon lamp unit until it locks into place. Check that "N = 0" appears on the display of the SC-2000USB.
- 4 Press the Set button on the SC-2000USB.



PROBLEM	SOLUTION
<ul style="list-style-type: none"> The xenon lamp flashed, but the desired stamp could not be engraved. 	<ul style="list-style-type: none"> Check that the cap was removed from the stamp before it was inserted. Check that there is no dust on the protective film covering the surface of the stamp. Check that the clear plastic surface of the xenon lamp unit is not dirty. Check that the printed draft sheet stopped over the xenon lamp unit before trying to engrave a stamp. The lines in the layout are too thin, the text is too small, or the fill pattern is too detailed. Replace the xenon lamp unit as explained on page 28.
<ul style="list-style-type: none"> The stamp was engraved too much. 	<ul style="list-style-type: none"> The layout is too detailed.
<ul style="list-style-type: none"> The stamp was not engraved well enough. 	<ul style="list-style-type: none"> Check that the clear plastic surface of the xenon lamp unit is not dirty. Replace the xenon lamp unit as explained on page 28.
<ul style="list-style-type: none"> Half of the stamp was either engraved too much or not enough. 	<ul style="list-style-type: none"> Check that the stamp is inserted so that its surface lies flat on the printed draft sheet before engraving it.
<ul style="list-style-type: none"> The stamp is attached to the printed draft sheet. 	<ul style="list-style-type: none"> Check that the protective film was not peeled off the surface of the stamp before it was engraved.
<ul style="list-style-type: none"> The draft sheet is not fed out after the stamp is engraved (the xenon lamp flashed). 	<ul style="list-style-type: none"> Check that the draft sheet feeds out automatically the next time that an ID label sheet or another draft sheet is printed.
<ul style="list-style-type: none"> The draft sheet or ID label sheet is jammed within the unit or the error messages "REMOVE LABEL 1", "REMOVE LABEL 2", or "REMOVE LABEL 3" appears on the display. 	<ul style="list-style-type: none"> Turn off the SC-2000USB, then remove the jammed draft sheet or ID label sheet as explained on page 31.